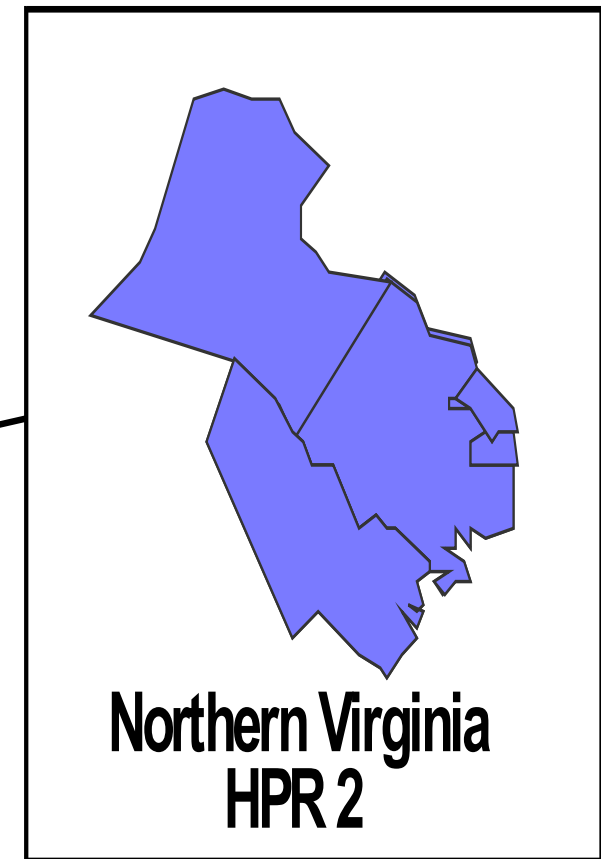
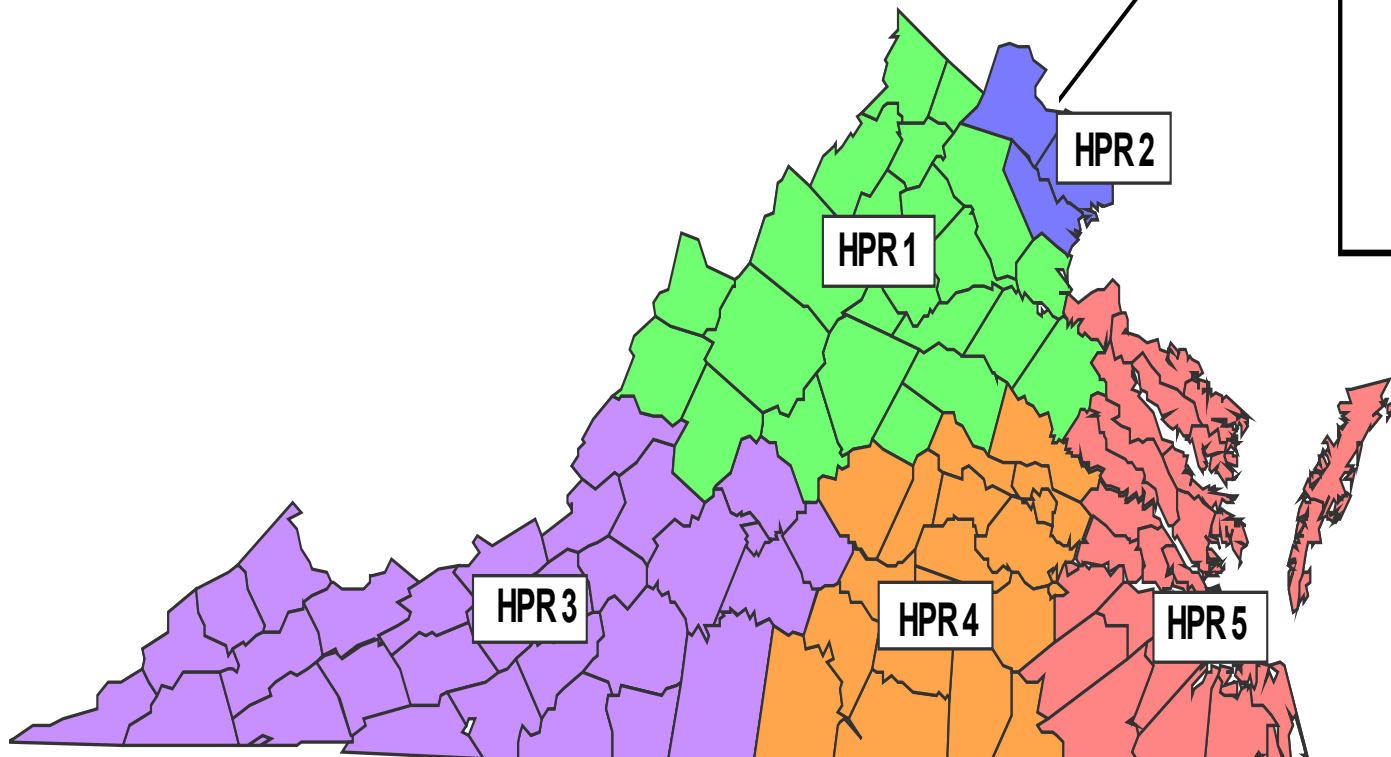


**Northern Virginia Health Services
Select Volumes, Trends, Use
November 2025**



Environment, Context

- Health Care System Evolving in Response to Economic, Social, Technical Forces
- Trends
 - Inpatient use decreasing (since early 1980s), population-based use rates dropping
 - Shift to outpatient care, multiple settings
 - Expenditures increasing, absolutely and as % of GDP
 - Service concentration in larger organizations, systems
 - Wide variation in use/demand geographically, among and within social and economic groups
 - System transparency remains problematic

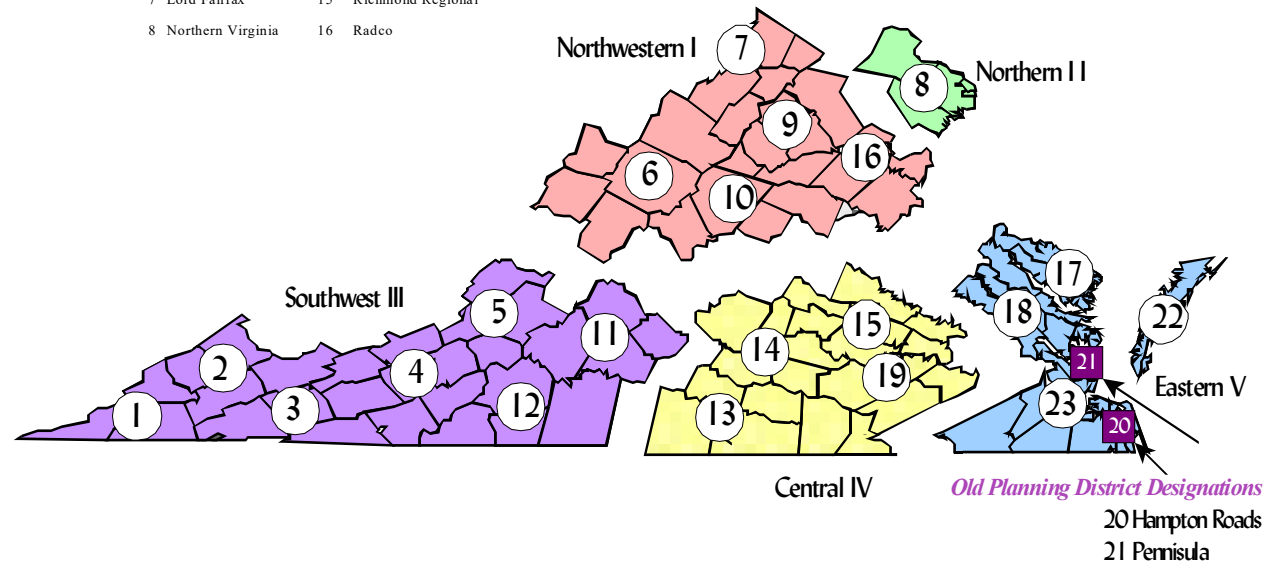
Distinctiveness of Northern Virginia

- Demography
 - Population Size & Growth, Age Composition, Affluence, Education, Lower Poverty Rate, Comparatively Large Immigrant Population
- Demand/Service Use Levels Relatively Low (compare: Metro, VA, US)
 - Across the Board: Hospitals, Nursing Homes, Surgery, Specialty Services (e.g., inpatient rehabilitation), *Typically 30% to 40% lower than U.S., & Other VA*
 - Comparatively Good Treatment Outcomes
 - Aggregate costs/charges comparatively low; Unit costs comparable to elsewhere
- Comparatively small number of licensed facilities (larger average size, scale)
 - 11 Acute Care Medical Surgical Hospitals (two additional authorized)
 - 2 Psychiatric Hospitals
 - 1 Rehabilitation Hospital
 - 30+ Nursing Homes

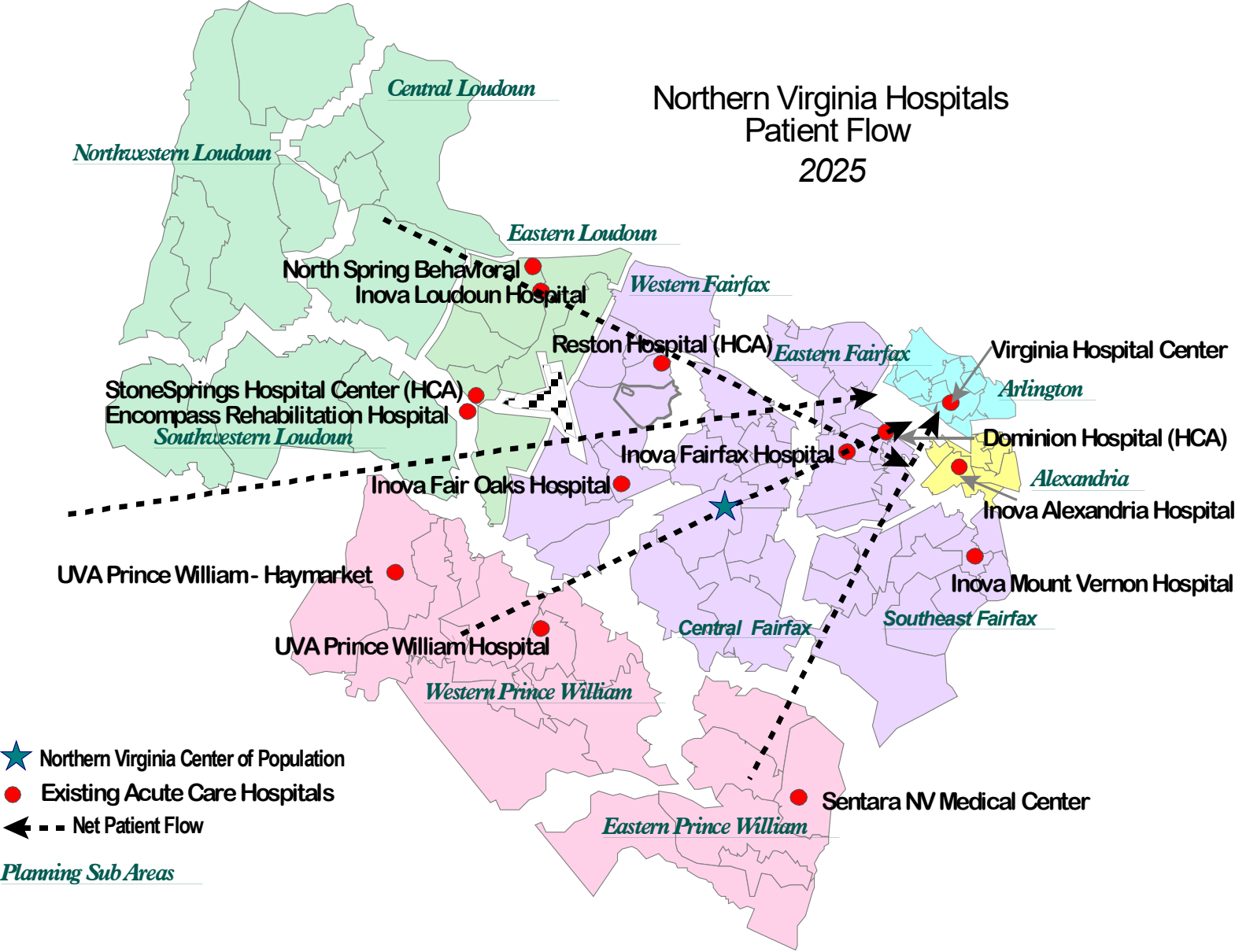
Virginia Planning Regions

Virginia Health Planning Regions & Planning Districts

1 Lenowisco	9 Rappahannock-Rapidian	17 Northern Neck
2 Cumberland Plateau	10 Thomas Jefferson	18 Middle Peninsula
3 Mount Rodgers	11 Central Virginia	19 Crater
4 New River Valley	12 West Piedmont	22 Accomack-Northampton
5 Fifth	13 Southside	23 Hampton Roads
6 Central Shenandoah	14 Piedmont	
7 Lord Fairfax	15 Richmond Regional	
8 Northern Virginia	16 Radco	

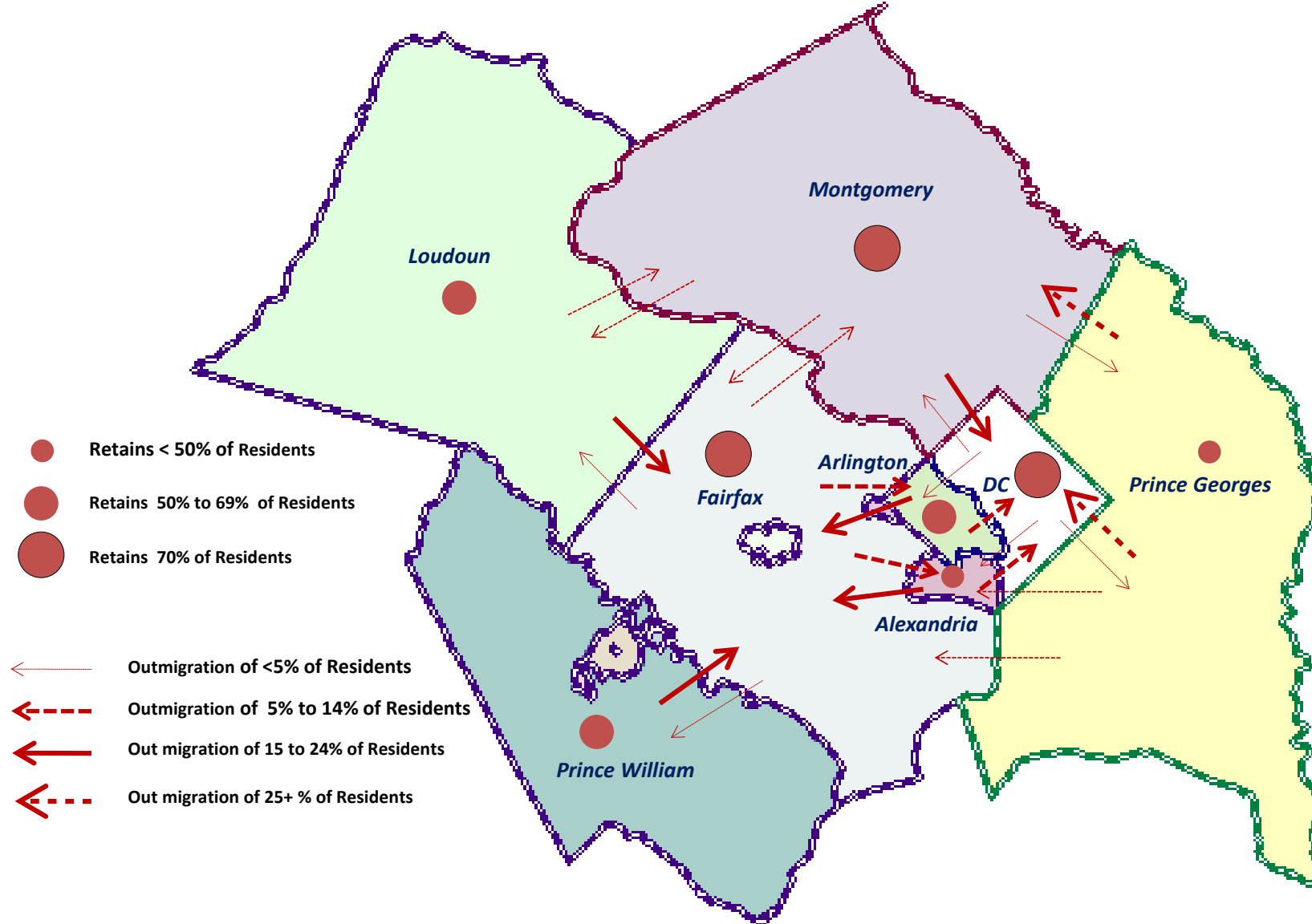


Northern Virginia Hospitals
Patient Flow
2025



Migration Patterns for Inpatient Hospital Care Residents of Immediate Metro Washington DC, 2018

Virginia, Maryland and DC Inpatient Discharge Data 2019,, Calculations and Tabulations HSAHV, 2020



Migration Matrix: PD of Patient Residence by PD of Facility																							
Percent by PD of Patient Residence (Best at Showing Retention within PD)																							
2024																							
(PD 99 is Out of State Residents)																							
		PD of Facility																					
Patient Residence																							
PD		1	2	3	4	5	6	7	8	9	10	11	12	13	14	15	16	17	18	19	22	23	Virginia Hospitals
1		78.93%	4.02%	9.10%	0.15%	2.36%	0.00%	0.00%	0.20%	0.03%	3.39%	0.20%	0.05%	0.00%	0.00%	0.93%	0.03%	0.00%	0.00%	0.20%	0.00%	0.40%	100.00%
2		5.74%	59.16%	14.18%	4.36%	12.23%	0.04%	0.05%	0.17%	0.00%	2.41%	0.19%	0.05%	0.01%	0.00%	0.61%	0.05%	0.00%	0.00%	0.37%	0.00%	0.37%	100.00%
3		0.05%	1.31%	65.46%	12.73%	14.60%	0.03%	0.04%	0.42%	0.00%	2.72%	0.19%	0.08%	0.00%	0.00%	0.79%	0.02%	0.00%	0.00%	0.78%	0.00%	0.77%	100.00%
4		0.01%	0.23%	0.81%	63.90%	30.85%	0.00%	0.02%	0.31%	0.02%	1.80%	0.15%	0.10%	0.00%	0.00%	1.10%	0.01%	0.00%	0.00%	0.40%	0.00%	0.28%	100.00%
5		0.00%	0.05%	0.09%	2.53%	92.91%	0.35%	0.03%	0.25%	0.00%	1.92%	0.33%	0.11%	0.01%	0.01%	0.67%	0.03%	0.00%	0.00%	0.33%	0.00%	0.39%	100.00%
6		0.00%	0.15%	0.07%	0.39%	5.93%	68.03%	0.78%	1.02%	0.01%	20.28%	0.43%	0.02%	0.00%	0.01%	1.58%	0.12%	0.01%	0.01%	0.44%	0.00%	0.73%	100.00%
7		0.00%	0.02%	0.03%	0.07%	0.16%	5.59%	79.11%	8.81%	0.49%	4.21%	0.09%	0.00%	0.00%	0.00%	0.55%	0.15%	0.00%	0.01%	0.23%	0.00%	0.46%	100.00%
8		0.00%	0.01%	0.02%	0.04%	0.04%	0.06%	0.28%	96.87%	0.12%	0.46%	0.03%	0.00%	0.00%	0.00%	0.38%	0.84%	0.00%	0.00%	0.43%	0.00%	0.41%	100.00%
9		0.00%	0.05%	0.07%	0.05%	0.08%	0.23%	1.90%	29.03%	30.34%	23.75%	0.10%	0.01%	0.00%	0.00%	1.95%	11.14%	0.03%	0.01%	0.51%	0.00%	0.75%	100.00%
10		0.00%	0.10%	0.11%	0.08%	0.23%	1.21%	0.06%	1.00%	0.27%	81.36%	2.15%	0.04%	0.00%	0.14%	9.34%	2.38%	0.01%	0.00%	0.52%	0.00%	0.99%	100.00%
11		0.01%	0.15%	0.19%	0.31%	11.30%	0.14%	0.03%	0.59%	0.00%	8.49%	74.31%	0.67%	0.05%	0.77%	1.33%	0.05%	0.00%	0.00%	0.64%	0.00%	0.96%	100.00%
12		0.01%	0.05%	0.29%	1.20%	29.87%	0.03%	0.02%	0.38%	0.00%	2.34%	11.44%	51.04%	0.47%	0.03%	1.08%	0.03%	0.00%	0.01%	0.83%	0.00%	0.88%	100.00%
13		0.00%	0.17%	0.15%	0.17%	0.79%	0.28%	0.03%	0.52%	0.03%	1.19%	6.76%	2.77%	51.22%	0.30%	28.61%	0.07%	0.01%	0.00%	5.57%	0.00%	1.37%	100.00%
14		0.00%	0.08%	0.06%	0.06%	0.24%	0.10%	0.01%	0.33%	0.03%	8.26%	12.69%	0.10%	7.18%	19.41%	47.99%	0.15%	0.01%	0.01%	2.25%	0.00%	1.02%	100.00%
15		0.00%	0.01%	0.01%	0.02%	0.12%	0.02%	0.02%	0.33%	0.01%	0.56%	0.06%	0.01%	0.02%	0.01%	94.89%	0.48%	0.05%	0.03%	2.00%	0.00%	1.37%	100.00%
16		0.00%	0.05%	0.01%	0.04%	0.10%	0.05%	0.04%	7.79%	0.27%	1.38%	0.04%	0.00%	0.00%	0.00%	11.33%	77.89%	0.01%	0.05%	0.36%	0.00%	0.59%	100.00%
17		0.00%	0.02%	0.02%	0.00%	0.06%	0.08%	0.03%	1.79%	0.05%	0.39%	0.02%	0.00%	0.00%	0.00%	49.86%	18.76%	8.98%	15.63%	0.77%	0.00%	3.55%	100.00%
18		0.00%	0.03%	0.02%	0.01%	0.04%	0.07%	0.04%	0.51%	0.01%	0.70%	0.10%	0.00%	0.01%	0.00%	39.20%	1.10%	0.46%	25.05%	0.68%	0.00%	31.98%	100.00%
19		0.00%	0.00%	0.02%	0.02%	0.11%	0.01%	0.00%	0.22%	0.00%	0.37%	0.13%	0.00%	0.21%	0.15%	39.97%	0.17%	0.01%	0.01%	55.42%	0.00%	3.16%	100.00%
22		0.00%	0.00%	0.08%	0.08%	0.05%	0.05%	0.00%	0.92%	0.00%	0.37%	0.00%	0.00%	0.00%	0.00%	3.69%	0.18%	0.05%	0.05%	0.55%	49.12%	44.80%	100.00%
23		0.00%	0.01%	0.02%	0.03%	0.05%	0.07%	0.02%	0.33%	0.00%	0.35%	0.04%	0.01%	0.01%	0.00%	2.58%	0.03%	0.01%	0.05%	0.81%	0.01%	95.57%	100.00%
99		0.14%	0.90%	2.82%	2.35%	6.44%	1.69%	18.03%	34.24%	0.15%	2.30%	0.56%	1.13%	0.35%	0.05%	5.66%	1.66%	0.02%	0.09%	1.55%	0.08%	19.81%	100.00%
Virginia Hospitals		0.47%	0.75%	1.59%	1.92%	7.06%	2.76%	3.86%	20.46%	0.78%	4.73%	3.25%	1.61%	0.73%	0.32%	19.97%	4.52%	0.09%	0.48%	2.89%	0.24%	21.52%	100.00%
Source: VHI Patient Level Database, HSNV Tabulations & Calculations, 2025									PD 99 = Out of State				PD 8 = Northern Virginia										

Virginia Inpatient Total Discharges (No Newborns)																							
Migration Matrix: PD of Patient Residence by PD of Facility																							
Percent by PD of Facility (Best at Showing Inmigration)																							
2024																							
(PD 99 is Out of State Residents)																							
								PD of Facility															
Patient Residence																							
PD		1	2	3	4	5	6	7	8	9	10	11	12	13	14	15	16	17	18	19	22	23	Virginia
1		84.89%	2.69%	2.87%	0.04%	0.17%	0.00%	0.00%	0.00%	0.02%	0.36%	0.03%	0.02%	0.00%	0.00%	0.02%	0.00%	0.00%	0.00%	0.03%	0.00%	0.01%	0.50%
2		12.87%	82.57%	9.32%	2.38%	1.81%	0.01%	0.01%	0.01%	0.00%	0.53%	0.06%	0.03%	0.02%	0.00%	0.03%	0.01%	0.00%	0.00%	0.14%	0.00%	0.02%	1.04%
3		0.19%	3.13%	73.60%	11.87%	3.69%	0.02%	0.02%	0.04%	0.00%	1.03%	0.10%	0.09%	0.00%	0.00%	0.07%	0.01%	0.00%	0.00%	0.48%	0.00%	0.06%	1.79%
4		0.03%	0.62%	1.05%	68.06%	8.92%	0.00%	0.01%	0.03%	0.05%	0.78%	0.10%	0.12%	0.00%	0.00%	0.11%	0.01%	0.00%	0.00%	0.28%	0.00%	0.03%	2.04%
5		0.00%	0.32%	0.25%	5.88%	58.46%	0.56%	0.03%	0.05%	0.02%	1.80%	0.45%	0.30%	0.07%	0.08%	0.15%	0.03%	0.00%	0.00%	0.51%	0.00%	0.08%	4.44%
6		0.00%	0.69%	0.15%	0.70%	2.93%	86.09%	0.71%	0.17%	0.06%	14.98%	0.47%	0.05%	0.00%	0.08%	0.28%	0.09%	0.53%	0.08%	0.53%	0.00%	0.12%	3.50%
7		0.00%	0.10%	0.06%	0.13%	0.08%	6.79%	68.77%	1.45%	2.09%	2.99%	0.10%	0.01%	0.02%	0.04%	0.09%	0.11%	0.13%	0.05%	0.27%	0.00%	0.07%	3.36%
8		0.03%	0.13%	0.25%	0.32%	0.10%	0.36%	1.26%	82.12%	2.74%	1.70%	0.17%	0.03%	0.00%	0.04%	0.33%	3.22%	0.53%	0.16%	2.61%	0.05%	0.33%	17.35%
9		0.00%	0.17%	0.10%	0.06%	0.03%	0.20%	1.16%	3.33%	91.03%	11.77%	0.07%	0.01%	0.00%	0.00%	0.23%	5.78%	0.80%	0.03%	0.42%	0.00%	0.08%	2.35%
10		0.00%	0.35%	0.18%	0.11%	0.09%	1.17%	0.04%	0.13%	0.92%	45.78%	1.76%	0.06%	0.02%	1.15%	1.25%	1.40%	0.40%	0.03%	0.47%	0.00%	0.12%	2.66%
11		0.05%	0.69%	0.40%	0.54%	5.38%	0.17%	0.03%	0.10%	0.02%	6.03%	76.92%	1.40%	0.24%	8.24%	0.22%	0.04%	0.13%	0.00%	0.75%	0.00%	0.15%	3.36%
12		0.05%	0.19%	0.52%	1.81%	12.23%	0.03%	0.02%	0.05%	0.00%	1.43%	10.18%	91.52%	1.85%	0.32%	0.16%	0.02%	0.00%	0.05%	0.83%	0.00%	0.12%	2.89%
13		0.00%	0.25%	0.11%	0.10%	0.13%	0.11%	0.01%	0.03%	0.05%	0.29%	2.38%	1.97%	79.63%	1.07%	1.64%	0.02%	0.13%	0.00%	2.20%	0.00%	0.07%	1.14%
14		0.00%	0.15%	0.06%	0.05%	0.05%	0.05%	0.00%	0.02%	0.05%	2.44%	5.46%	0.09%	13.63%	85.67%	3.35%	0.05%	0.13%	0.03%	1.09%	0.00%	0.07%	1.40%
15		0.03%	0.12%	0.14%	0.19%	0.26%	0.13%	0.07%	0.25%	0.11%	1.81%	0.27%	0.05%	0.41%	0.52%	73.26%	1.64%	8.38%	0.87%	10.67%	0.05%	0.98%	15.42%
16		0.03%	0.29%	0.04%	0.11%	0.07%	0.08%	0.05%	1.80%	1.63%	1.37%	0.06%	0.00%	0.00%	0.00%	2.68%	81.34%	0.27%	0.52%	0.58%	0.00%	0.13%	4.72%
17		0.00%	0.02%	0.01%	0.00%	0.01%	0.02%	0.01%	0.07%	0.05%	0.07%	0.00%	0.00%	0.00%	0.00%	2.07%	3.44%	78.59%	26.99%	0.22%	0.00%	0.14%	0.83%
18		0.00%	0.05%	0.02%	0.01%	0.01%	0.03%	0.01%	0.03%	0.02%	0.19%	0.04%	0.00%	0.02%	0.00%	2.56%	0.32%	6.38%	68.05%	0.30%	0.00%	1.94%	1.30%
19		0.00%	0.02%	0.05%	0.04%	0.05%	0.02%	0.00%	0.04%	0.02%	0.28%	0.15%	0.01%	1.04%	1.75%	7.16%	0.13%	0.40%	0.05%	68.72%	0.05%	0.53%	3.58%
22		0.00%	0.00%	0.02%	0.02%	0.00%	0.01%	0.00%	0.02%	0.00%	0.04%	0.00%	0.00%	0.00%	0.00%	0.09%	0.02%	0.27%	0.05%	0.09%	97.29%	0.99%	0.48%
23		0.00%	0.34%	0.26%	0.33%	0.14%	0.53%	0.09%	0.32%	0.03%	1.46%	0.22%	0.07%	0.26%	0.12%	2.58%	0.15%	1.86%	1.89%	5.61%	0.52%	88.51%	19.93%
99		1.84%	7.12%	10.54%	7.27%	5.42%	3.63%	27.71%	9.93%	1.11%	2.88%	1.02%	4.18%	2.81%	0.92%	1.68%	2.18%	1.06%	1.15%	3.19%	2.03%	5.46%	5.94%
Virginia		100.00%	100.00%	100.00%	100.00%	100.00%	100.00%	100.00%	100.00%	100.00%	100.00%	100.00%	100.00%	100.00%	100.00%	100.00%	100.00%	100.00%	100.00%	100.00%	100.00%	100.00%	100.00%
Source: VHI Patient Level Database, HSA NV Tabulations & Calculations, 2025								PD 8 = Northern Virginia															

Migration Matrix: PD of Patient Residence by PD of Facility

2024

(PD 99 is Out of State Residents)

MDC (Multiple Items)

PD of Facility																							
Patient Residence																							
PD		1	2	3	4	5	6	7	8	9	10	11	12	13	14	15	16	17	18	19	22	23	Grand Total
1		37	97	139	4	9			4		2	5	1			2				7		14	321
2		2	268	117	50	45		3	11		2	13	2			8	1			31		21	574
3			148	539	138	84		1	44		7	16	4			21	1			110		102	1,215
4			27	45	932	463			19		3	10	3			31	2			63		38	1,636
5			19	20	561	2,994	6	2	66		9	39	9			31	7			112		98	3,973
6			41	16	67	139	1,295	20	159		98	74	2			77	9	3		112		175	2,287
7			6	7	15	26	67	1,448	507	2	13	19				29	10	1		61		90	2,301
8			8	29	29	31	39	44	11,079	3	27	37				158	96	1		588		417	12,586
9			10	10	9	6	12	15	534	72	125	12	1			56	140	4		95		106	1,207
10			21	22	11	29	41	1	115	2	788	81	5		1	159	28	3		103		170	1,580
11			40	44	60	203	14	1	103		32	1,514	39			65	5	1		166		226	2,513
12			9	25	118	352	2		63		10	183	1,020		1	30	1			186		186	2,186
13			15	10	12	12	21		27		1	29	10	77	1	148	1	1		103		84	552
14			8	5	6	10	6		19		21	195	1	12	26	224	10	1		114		75	733
15			6	10	19	85	10	5	188		28	43	4			10,357	260	57	5	1,107		605	12,789
16			17	3	12	29	9	6	352		9	14				259	2,474	2		122		157	3,465
17			1	1		3	3		12		1	1				115	83	70	23	36		60	409
18			2	2	1	3	1	1	23			5				170	9	20	45	52		370	704
19			1	3	4	18	1		30			18		1		709	29	1		1,852		170	2,837
22				2	1				9							5	2	1		17	14	236	287
23			19	21	26	33	66	12	246		18	35	4			367	25	13		794		15,915	17,594
99		2	38	296	84	129	60	378	1,407	3	43	40	42	3	1	356	108	2	1	356		796	4,145
Grand Total		41	801	1,366	2,159	4,703	1,653	1,937	15,017	82	1,237	2,383	1,147	93	30	13,377	3,301	181	74	6,187	14	20,111	75,894
Source: VHI Patient Level Database, HSNV Tabulations & Calculations, 2025										PD 8 = Northern Virginia													

Percent by PD of Patient Residence (Best at Showing Retention within PD)																							
2024																							
(PD 99 is Out of State Residents)																							
MDC	(Multiple Items)																						
		PD of Facility																					
Patient Residence																							
PD		1	2	3	4	5	6	7	8	9	10	11	12	13	14	15	16	17	18	19	22	23	Grand Total
1		11.53%	30.22%	43.30%	1.25%	2.80%	0.00%	0.00%	1.25%	0.00%	0.62%	1.56%	0.31%	0.00%	0.00%	0.62%	0.00%	0.00%	0.00%	2.18%	0.00%	4.36%	100.00%
2		0.35%	46.69%	20.38%	8.71%	7.84%	0.00%	0.52%	1.92%	0.00%	0.35%	2.26%	0.35%	0.00%	0.00%	1.39%	0.17%	0.00%	0.00%	5.40%	0.00%	3.66%	100.00%
3		0.00%	12.18%	44.36%	11.36%	6.91%	0.00%	0.08%	3.62%	0.00%	0.58%	1.32%	0.33%	0.00%	0.00%	1.73%	0.08%	0.00%	0.00%	9.05%	0.00%	8.40%	100.00%
4		0.00%	1.65%	2.75%	56.97%	28.30%	0.00%	0.00%	1.16%	0.00%	0.18%	0.61%	0.18%	0.00%	0.00%	1.89%	0.12%	0.00%	0.00%	3.85%	0.00%	2.32%	100.00%
5		0.00%	0.48%	0.50%	14.12%	75.36%	0.15%	0.05%	1.66%	0.00%	0.23%	0.98%	0.23%	0.00%	0.00%	0.78%	0.18%	0.00%	0.00%	2.82%	0.00%	2.47%	100.00%
6		0.00%	1.79%	0.70%	2.93%	6.08%	56.62%	0.87%	6.95%	0.00%	4.29%	3.24%	0.09%	0.00%	0.00%	3.37%	0.39%	0.13%	0.00%	4.90%	0.00%	7.65%	100.00%
7		0.00%	0.26%	0.30%	0.65%	1.13%	2.91%	62.93%	22.03%	0.09%	0.56%	0.83%	0.00%	0.00%	0.00%	1.26%	0.43%	0.04%	0.00%	2.65%	0.00%	3.91%	100.00%
8		0.00%	0.06%	0.23%	0.23%	0.25%	0.31%	0.35%	88.03%	0.02%	0.21%	0.29%	0.00%	0.00%	0.00%	1.26%	0.76%	0.01%	0.00%	4.67%	0.00%	3.31%	100.00%
9		0.00%	0.83%	0.83%	0.75%	0.50%	0.99%	1.24%	44.24%	5.97%	10.36%	0.99%	0.08%	0.00%	0.00%	4.64%	11.60%	0.33%	0.00%	7.87%	0.00%	8.78%	100.00%
10		0.00%	1.33%	1.39%	0.70%	1.84%	2.59%	0.06%	7.28%	0.13%	49.87%	5.13%	0.32%	0.00%	0.06%	10.06%	1.77%	0.19%	0.00%	6.52%	0.00%	10.76%	100.00%
11		0.00%	1.59%	1.75%	2.39%	8.08%	0.56%	0.04%	4.10%	0.00%	1.27%	60.25%	1.55%	0.00%	0.00%	2.59%	0.20%	0.04%	0.00%	6.61%	0.00%	8.99%	100.00%
12		0.00%	0.41%	1.14%	5.40%	16.10%	0.09%	0.00%	2.88%	0.00%	0.46%	8.37%	46.66%	0.00%	0.05%	1.37%	0.05%	0.00%	0.00%	8.51%	0.00%	8.51%	100.00%
13		0.00%	2.72%	1.81%	2.17%	2.17%	3.80%	0.00%	4.89%	0.00%	0.18%	5.25%	1.81%	13.95%	0.18%	26.81%	0.18%	0.18%	0.00%	18.66%	0.00%	15.22%	100.00%
14		0.00%	1.09%	0.68%	0.82%	1.36%	0.82%	0.00%	2.59%	0.00%	2.86%	26.60%	0.14%	1.64%	3.55%	30.56%	1.36%	0.14%	0.00%	15.55%	0.00%	10.23%	100.00%
15		0.00%	0.05%	0.08%	0.15%	0.66%	0.08%	0.04%	1.47%	0.00%	0.22%	0.34%	0.03%	0.00%	0.00%	80.98%	2.03%	0.45%	0.04%	8.66%	0.00%	4.73%	100.00%
16		0.00%	0.49%	0.09%	0.35%	0.84%	0.26%	0.17%	10.16%	0.00%	0.26%	0.40%	0.00%	0.00%	0.00%	7.47%	71.40%	0.06%	0.00%	3.52%	0.00%	4.53%	100.00%
17		0.00%	0.24%	0.24%	0.00%	0.73%	0.73%	0.00%	2.93%	0.00%	0.24%	0.24%	0.00%	0.00%	0.00%	28.12%	20.29%	17.11%	5.62%	8.80%	0.00%	14.67%	100.00%
18		0.00%	0.28%	0.28%	0.14%	0.43%	0.14%	0.14%	3.27%	0.00%	0.00%	0.71%	0.00%	0.00%	0.00%	24.15%	1.28%	2.84%	6.39%	7.39%	0.00%	52.56%	100.00%
19		0.00%	0.04%	0.11%	0.14%	0.63%	0.04%	0.00%	1.06%	0.00%	0.00%	0.63%	0.00%	0.04%	0.00%	24.99%	1.02%	0.04%	0.00%	65.28%	0.00%	5.99%	100.00%
22		0.00%	0.00%	0.70%	0.35%	0.00%	0.00%	0.00%	3.14%	0.00%	0.00%	0.00%	0.00%	0.00%	0.00%	1.74%	0.70%	0.35%	0.00%	5.92%	4.88%	82.23%	100.00%
23		0.00%	0.11%	0.12%	0.15%	0.19%	0.38%	0.07%	1.40%	0.00%	0.10%	0.20%	0.02%	0.00%	0.00%	2.09%	0.14%	0.07%	0.00%	4.51%	0.00%	90.46%	100.00%
99		0.05%	0.92%	7.14%	2.03%	3.11%	1.45%	9.12%	33.94%	0.07%	1.04%	0.97%	1.01%	0.07%	0.02%	8.59%	2.61%	0.05%	0.02%	8.59%	0.00%	19.20%	100.00%
Grand Total		0.1%	1.1%	1.8%	2.8%	6.2%	2.2%	2.6%	19.8%	0.1%	1.6%	3.1%	1.5%	0.1%	0.0%	17.6%	4.3%	0.2%	0.1%	8.2%	0.0%	26.5%	100.00%
Source: VHI Patient Level Database, HSNV Tabulations & Calculations, 2025																							

Virginia Inpatient Psych Discharges (MDCs 19 & 20)																						
Migration Matrix: PD of Patient Residence by PD of Facility																						
Percent by PD of Facility (Best at Showing Inmigration)																						
2024																						
(PD 99 is Out of State Residents)																						

Hospital Service Volumes & Charges Virginia Health Service Areas, 2024				
Health Service Area	Discharges	Patient Days	ALOS (Days)	Average Charge
1 Northwestern	132,410	675,083	5.10	\$55,353
2 Northern	162,701	895,474	5.50	\$50,896
3 Southwestern	132,263	675,735	5.11	\$69,354
4 Central	190,059	1,078,475	5.67	\$105,306
5 Eastern	177,606	1,026,833	5.78	\$54,655
Virginia	795,039	4,351,600	5.47	\$68,556

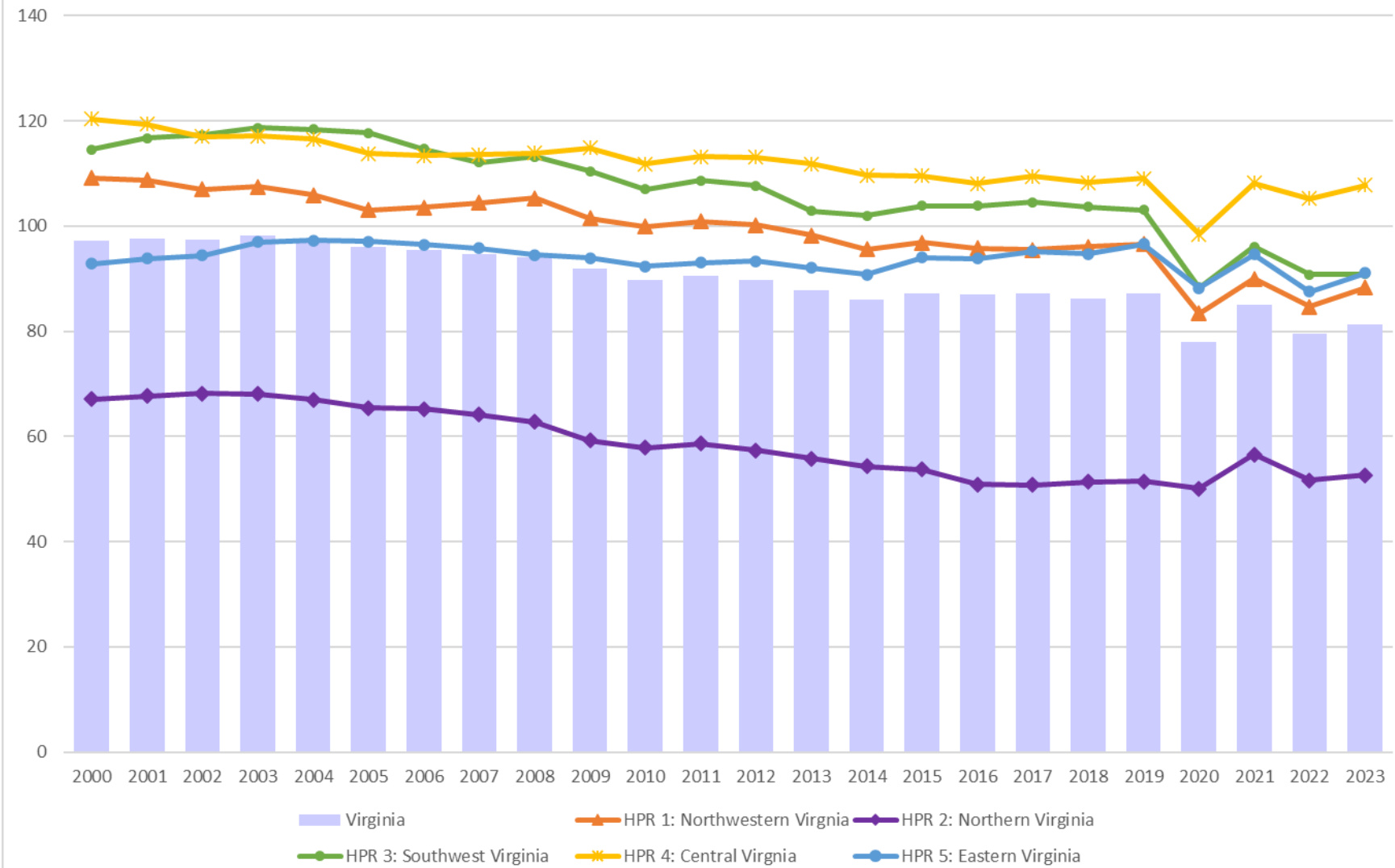
Source: VHI Patient Level Database, 2024; HSANV Tabulations & Calculations

Inpatient Capacity and Use Virginia Acute Care Hospitals, 2024							
Planning Region	Population	Licensed Beds	Discharges	Patient Days	Licensed Beds (1,000 Population)	Discharges (1,000 Population)	Patient Days (1,000 Population)
1 - Northwestern	1,438,961	2,998	147,736	716,981	2.1	102.7	498.3
2 - Northern	2,601,818	3,368	195,893	990,865	1.3	75.3	380.8
3 - Southwestern	1,329,487	4,118	143,624	703,541	3.1	108.0	529.2
4 - Central	1,535,742	4,732	206,971	1,110,183	3.1	134.8	722.9
5 - Eastern	1,905,187	4,430	200,691	1,106,194	2.3	105.3	580.6
Virginia Total	8,811,195	19,646	894,915	4,627,764	2.2	101.6	525.2
NV Percent of State	29.5%	17.1%	21.9%	21.4%	58.1%	74.1%	72.5%

Source: Hospital Data, VHI ALSD, 2024; Population Estimates, U.S. Census.

NOTE: Facility based data

Virginia Inpatient Discharges per 1,000 Population by HPR of Patient Residence 2000 - 2023



Emergency Use Virginia Acute Care Hospitals, 2024											
Planning Region	Population	Emergency Department Visits	ED Visits per 1,000 Population	Emergency Patients Admitted	Percent of ED Patients Admitted	Medical Surgical ED Admissions	Medical Surgical ED Admissions (%)	Intensive Care ED Admissions	Intensive Care ED Admissions (%)	Psychiatric ED Admissions	Psychiatric Admissions (%)
1 - Northwestern	1,438,961	673,901	468.3	99,941	14.8%	80,900	80.9%	9,720	9.7%	4,498	4.5%
2 - Northern	2,601,818	811,152	311.8	99,808	12.3%	74,520	74.7%	8,375	8.4%	3,030	3.0%
3 - Southwestern	1,329,487	678,605	510.4	91,102	13.4%	76,009	83.4%	8,666	9.5%	4,557	5.0%
4 - Central	1,535,742	856,976	558.0	130,619	15.2%	108,076	82.7%	6,109	4.7%	9,025	6.9%
5 - Eastern	1,905,187	1,004,330	527.2	133,984	13.3%	105,160	78.5%	18,410	13.7%	7,317	5.5%
Virginia Total	8,811,195	4,024,964	456.8	555,454	13.8%	444,665	80.1%	51,280	9.2%	28,427	5.1%
NV Percent of State	29.5%	20.2%	68.2%	18.0%	89.2%	16.8%	93.3%	16.3%	90.9%	10.7%	59.3%
Source: Hospital Data, VHI ALSD, 2024; Population Estimates, U.S. Census.											
NOTE: Facility based data											

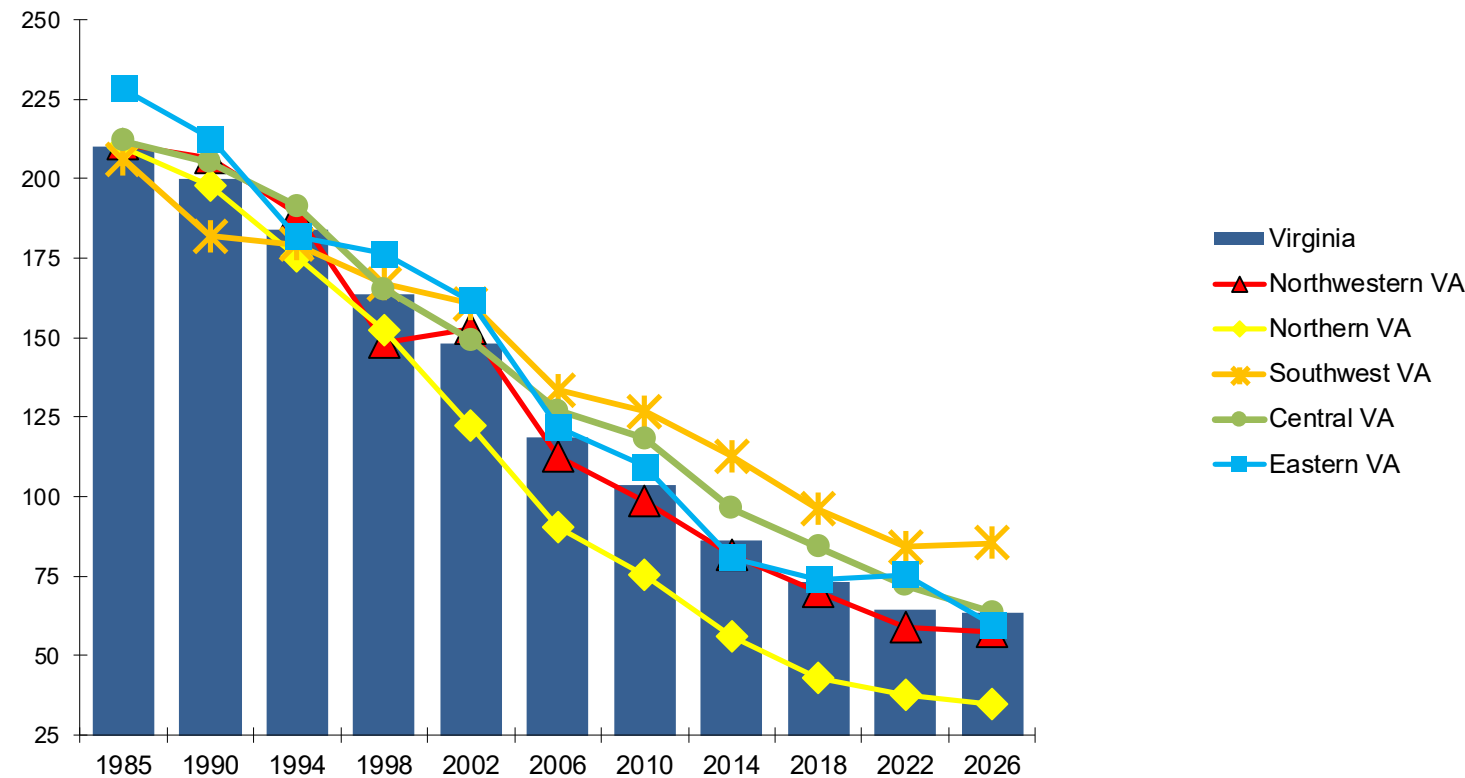
Nursing Home Capacity and Use Virginia Nursing Care Facilities, 2024										
Planning Region	Population	Licensed Beds	Medicare Days	Medicaid Days	Total Patient Days	Licensed Beds per 1,000 Pop	Medicare Days per 1,000 Pop	Medicaid Days per 1,000 Pop	Total Patient Days per 1,000 Pop	Average Occupancy of Licensed Beds
1 - Northwestern	1,438,961	5,097	190,321	1,010,264	1,535,383	3.5	132.26	702.08	1,067.0	85.2%
2 - Northern	2,601,818	4,150	182,184	645,354	1,201,199	1.6	70.02	248.04	461.7	87.2%
3 - Southwestern	1,329,487	9,232	301,054	1,912,821	2,914,025	6.9	226.44	1,438.77	2,191.8	86.4%
4 - Central	1,535,742	6,623	203,279	1,209,070	1,917,810	4.3	132.37	787.29	1,248.8	83.4%
5 - Eastern	1,905,187	7,180	281,869	1,500,261	2,242,812	3.8	147.95	787.46	1,177.2	86.1%
Virginia Total	8,811,195	32,282	1,158,707	6,277,770	9,811,229	3.7	131.50	712.48	1,113.5	85.6%
NV Percent of State	29.5%	12.9%	15.7%	10.3%	12.2%	43.5%	53.2%	34.8%	41.5%	101.8%

Source: Hospital Data, VHI ALSD, 2024; Population Estimates, U.S. Census. NOTE: Facility based data

Use Rates for Residents 85+ Years of Age, 1985 - 2026*

Source: Virginia Nursing Home Patient Origin Surveys: 1985, 1990, 1994, 1998, 2002, 2006 and 2014. VHI Licensure Survey 2010, 2018, 2022; Calculations & Tabulations, HSAHV 2024.

* 2026 Projected

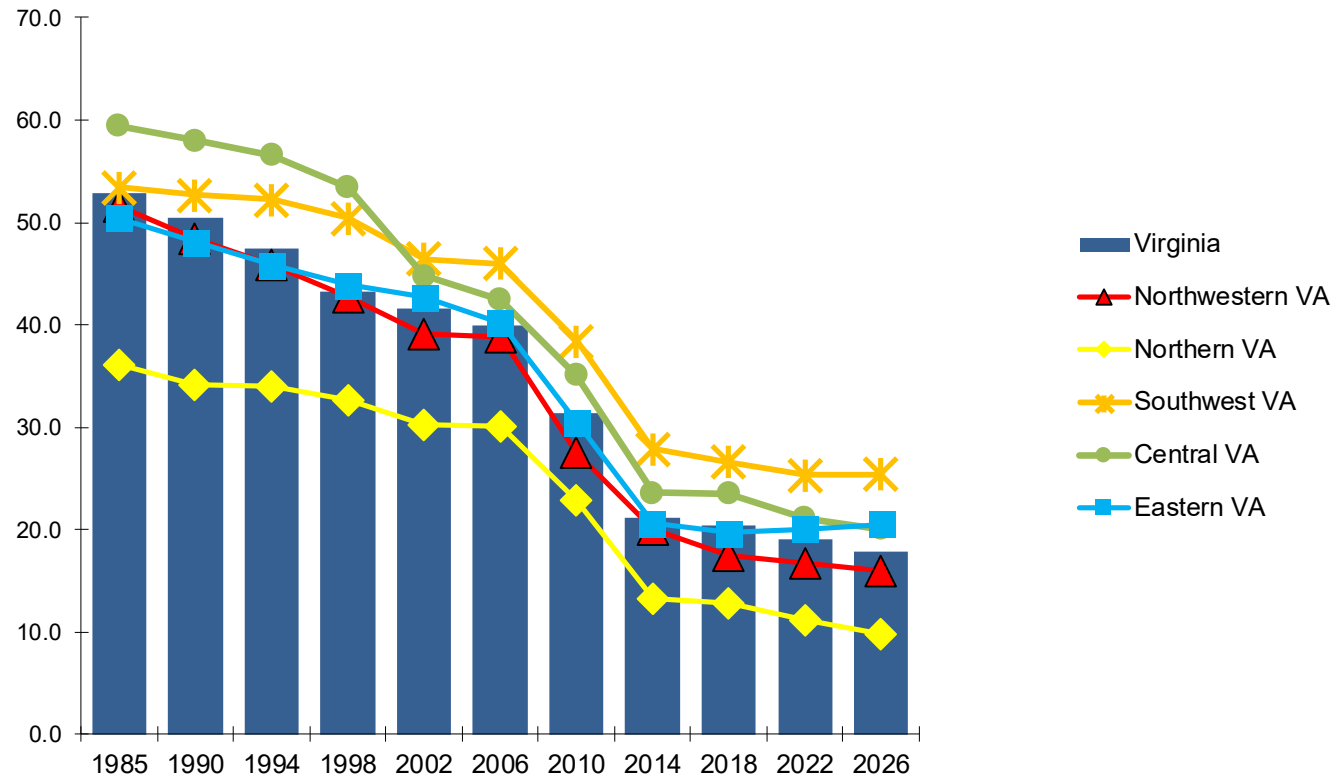


Planning Region	1985	1990	1994	1998	2002	2006	2010	2014	2018	2022	2026
Northwestern VA	210.7	206.4	189.3	148.37	152.6	148.6	98.6	81.5	70.1	58.8	57.6
Northern VA	210.0	197.6	175.62	152.29	122.2	106.0	75.4	56.0	43.0	37.5	34.7
Southwest VA	206.1	182.0	179.25	166.92	160.6	154.3	126.8	112.7	96.0	84.2	85.3
Central VA	211.9	205.1	191.42	165.13	149.2	147.6	118.3	96.3	84.1	72.1	63.7
Eastern VA	228.3	212.6	182	176.3	161.7	155.7	109.7	80.9	74.0	75.5	59.9
Virginia	210.3	200.1	183.95	163.45	148.1	143.6	103.5	86.0	73.2	64.5	63.4

Virginia Nursing Home Residents

Use Rates for Residents 65+ Years of Age, 1985 - 2026*

Source: Virginia Nursing Home Patient Origin Surveys: 1985, 1990, 1994, 1998, 2002, 2006 and 2014. VHI Licensure Survey 2010, 2018, 2022;
Calculations & Tabulations, HSAHV 2024
* 2026 Projected

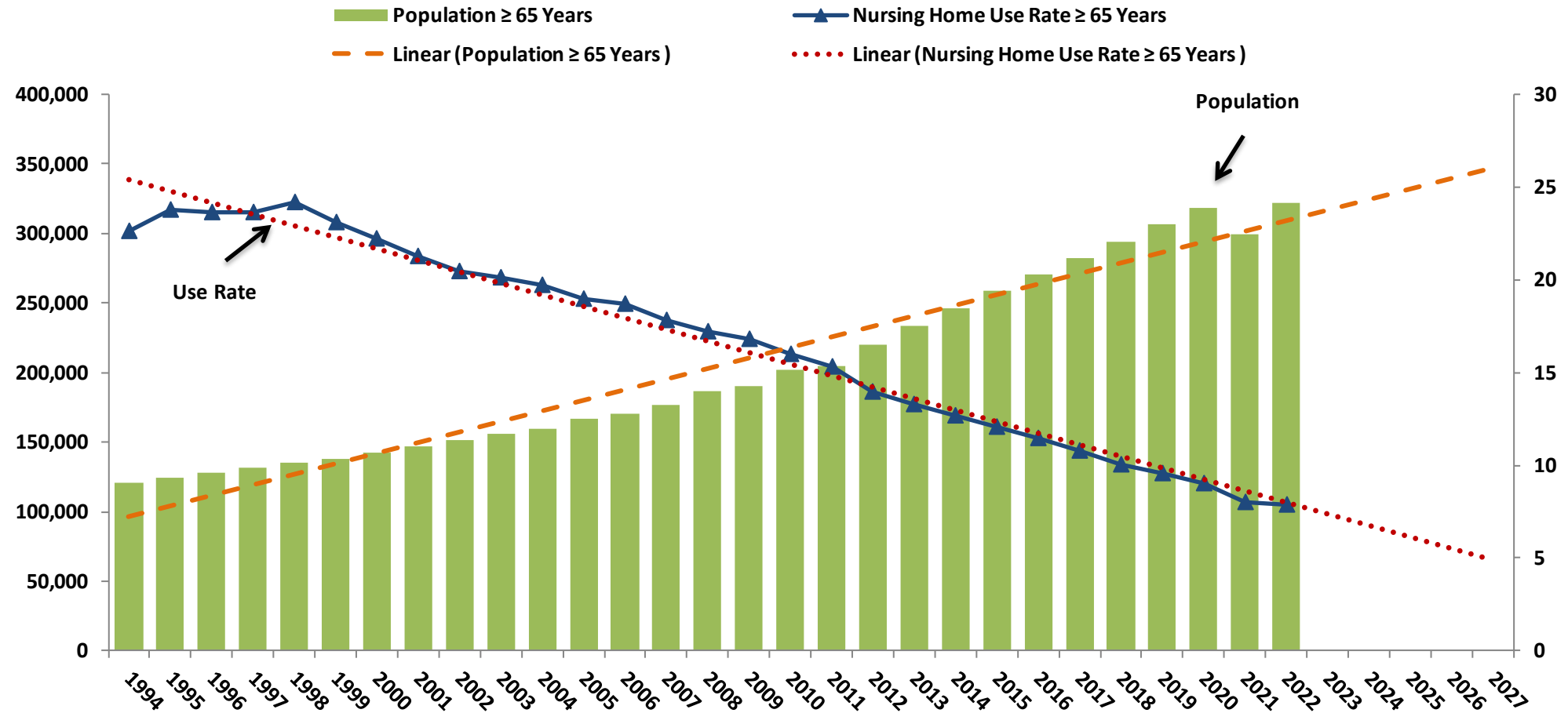


Planning Region	1985	1990	1994	1998	2002	2006	2010	2014	2018	2022	2026
Northwestern VA	210.7	206.4	189.3	148.37	152.6	148.6	98.6	81.5	17.5	16.7	15.9
Northern VA	210.0	197.6	175.62	152.29	122.2	106.0	75.4	56.0	12.8	11.2	9.7
Southwest VA	206.1	182.0	179.25	166.92	160.6	154.3	126.8	112.7	26.6	25.3	25.4
Central VA	211.9	205.1	191.42	165.13	149.2	147.6	118.3	96.3	23.5	21.1	20.0
Eastern VA	228.3	212.6	182	176.3	161.7	155.7	109.7	80.9	19.7	20.1	20.5
Virginia	210.3	200.1	183.95	163.45	148.1	143.6	103.5	86.0	20.4	19.0	17.9

Northern Virginia Nursing Home Use

Northern Virginia Residents in Northern Virginia Nursing Homes

Residents per 1,000 Population ≥ 65 Years, 1994 - 2022

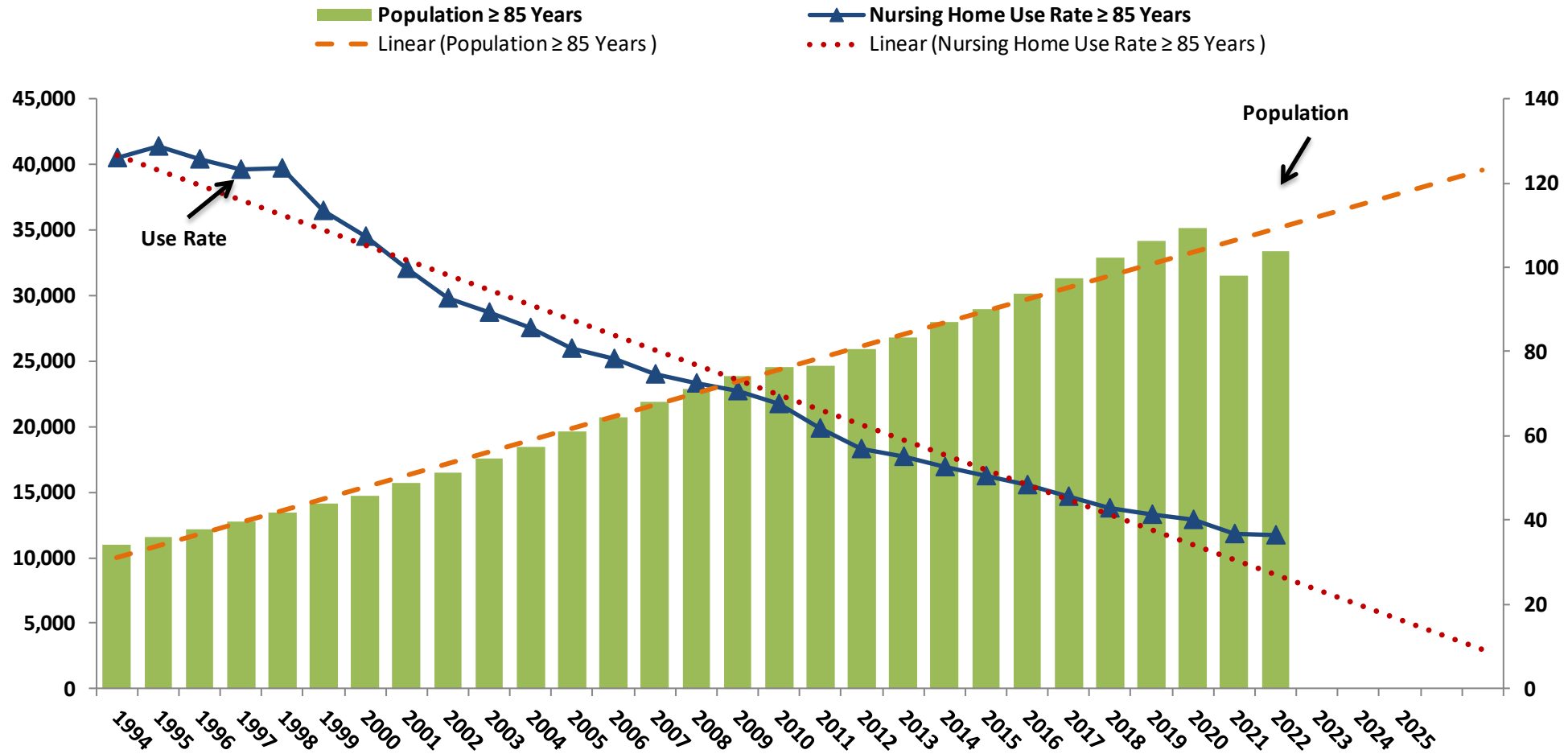


Source: Virginia Nursing Home Patient Origin Surveys 1994, 1998, 2002, 2006 and 2014; VDH License Surveys 1995-1999. Virginia Health Information Licensure Surveys 2001 - 2022; U.S. Census 1990 -2023 Population July 1st Estimates; Calculations & Tabulations HSANV, 2024.

Northern Virginia Nursing Home Use

Northern Virginia Residents in Northern Virginia Nursing Homes

Residents per 1,000 Population ≥ 85 Years, 1994 - 2022



Source: Virginia Nursing Home Patient Origin Surveys 1994, 1998, 2002, 2006 and 2014; VDH License Surveys 1995-1999. Virginia Health Information Licensure Surveys 2001 - 2022; U.S. Census 1990 -2023 Population July 1st Estimates; Calculations & Tabulations HSNV, 2024.